

## Water Extension Language

The XXXX public water system is looking at a project that may extend water service to your residence in the future. If lead is present in the interior plumbing and fixtures in your residence, it is possible that a change in source from your private well to the public water system could possibly increase your risk of lead exposure through the drinking water. Lead is a heavy metal that can be toxic to humans and animals, causing health effects. Lead is rarely found in source water and typically enters drinking water through the wearing away (corrosion) of plumbing materials that contain lead. The most common sources of lead in drinking water are lead pipes, such as lead service lines, and faucets and fixtures that contain lead. Other sources of lead may include older types of paint, contaminated soil, or other household products. Lead in drinking water is tasteless, colorless, and odorless and can only be detected by lab analysis.

Exposure to lead in drinking water can cause serious health effects in all age groups. Infants and children can have decreases in IQ and attention span. Lead exposure can lead to new learning and behavior problems or exacerbate existing learning and behavior problems. The children of women who are exposed to lead before or during pregnancy can have increased risk of these adverse health effects. Adults can have increased risks of heart disease, high blood pressure, kidney or nervous system problems.

The enclosed information from the United States Environmental Protection Agency and the West Virginia Department of Health describes the source of lead in drinking water and methods to reduce exposure to lead. It is strongly recommended that you evaluate your water service line and interior plumbing and fixtures to eliminate potential sources of lead and/or that you take measures to reduce exposure to lead.

# Protecting Children from Lead

## How can children be exposed?



Living in homes with lead paint, a lead service line, or brass faucets and fixtures



Soil



Drinking water/pipes and plumbing



Industrial sites

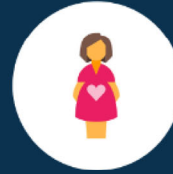
## How does lead affect children?



- Damage to brain and nervous system
- Hearing and speech problems
- Lower IQ



- Learning and behavior problems
- Slowed growth and development
- Decreased attention

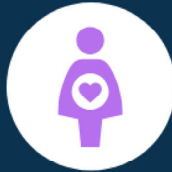


- Risk of miscarriage
- Baby may be born too early or too small
- Damage to baby's brain, kidneys, and nervous system

## Who is most vulnerable?



Children younger than 6 years old



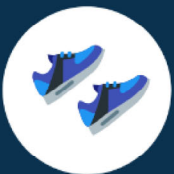
Pregnant women

## Do not boil water:

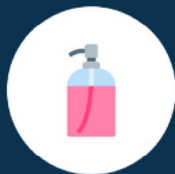


Boiling water does not remove lead from water

## Simple steps you can take to reduce exposure:



Remove shoes before entering the house



Wash hands, bottles, pacifiers and toys often



Use bottled water Run faucet on cold for 3 minutes if water hasn't been used for 6 hours often



Have your child tested for lead exposure



Renovate safely



Feed children meals high in calcium and iron



Use cold water for drinking/cooking



Use point of use filter NSF/ANSI standard 53 & claim of lead reduction

# I May Have Lead (Pb) In My Water

## What Can I Do?

[wwwwww.e.peap.gao.gv/odvw/rdewgirnefog/ilnefaod/-laenadd-c-aopnpde-r](http://wwwwww.e.peap.gao.gv/odvw/rdewgirnefog/ilnefaod/-laenadd-c-aopnpde-r)

Flushing pipes is very important to remove lead in water that has been sitting for several hours.

NOTE: Boiling water does NOT remove lead in your water.

### Step 1 - Flush Water

Run cold water at the highest flow from the kitchen faucet for 2 minutes.



### Step 2

Pour fresh water into a filtered pitcher.



### Step 3

Use the filtered water for drinking, cooking, and baby formula. Store additional filtered water for use throughout the day.



### Can I Take a Shower or Wash My Hands?

It is okay for water with lead in it to touch your skin. You can still wash your hands and take a bath using unfiltered water.



### Can I Brush My Teeth?

Make sure you brush your teeth with filtered or bottled water.



### Can I Wash Dishes?

You can still wash and dry the dishes and stay safe! Dishes will not soak up the lead in the water.



### Can I Wash Clothes?

Lead will not soak into clothes. If the water with lead in it does get into your clothes, it will not make you sick if the clothes touch your skin.



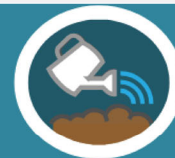
### Can I Give My Pet Water?

ONLY give your pet water that is safe for you to drink! Make sure to give your pet filtered or bottled water.

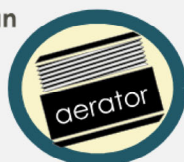


### Can I Water My Garden?

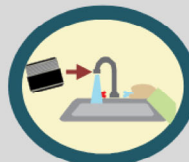
You can use the water flushed from the tap to water plants.



Regularly clean your faucet aerators.



An aerator is a device attached to the tip of a faucet.



It's important to clean faucet aerators and screens to remove small particles and any debris from them.





*Town of Ellenboro*  
*West Virginia*

February 6, 2025

Dear Highland Resident

Subject: Lead Line Public Education  
Highland Water Project  
IJDC# 2024W-2632  
Thrasher Project T10-11269



The Town of Ellenboro is pursuing funding to extend a water line along Highland Road. As part of that effort, several residents have had their well water tested for arsenic and lead.

Arsenic can be found in well water. The planned water line extension will likely reduce the levels of arsenic as the use of well water will be discontinued for everyday use.

Lead does not normally originate from well water; it typically originates from the water service line from the well to the house and/or in the interior plumbing and fixtures in the house. Therefore, the waterline extension will NOT likely reduce the level of lead as the source of the lead is typically the water service line and/or the interior plumbing and fixtures. To remove the lead residents would have to make changes to interior water lines or install a filter under the kitchen sink. It is recommended that your water be tested for lead after connecting to the public water supply to verify if the lead readings have been reduced below Maximum Contaminant Level (MCL) for Lead of 15.0 (ug/L). If the lead levels are not below MCL, interior plumbing is likely the cause of the lead contamination and should be evaluated for replacement.

The enclosed information from the United States Environmental Protection Agency and the West Virginia Department of Health describes the source of lead in drinking water and methods to reduce exposure to lead. It is strongly recommended that you evaluate your water service line and interior plumbing and fixtures to eliminate potential sources of lead and/or that you take measure to reduce exposure to lead.

Sincerely,  
Town of Ellenboro.

Amanda Williamson  
City Manager

Enclosures: Lead Educational Infographics (4)